

Appendix 2



Conwy and Denbighshire performance report for 2016-2017

Contents

The North Wales Community Safety Partnerships focus (NW CSP)	3
Victim Based Crime	4
Antisocial Behaviour	5
Domestic Abuse	6
Reoffending.....	7
Glossary.....	8
Appendix - Victim based Crime	9
Appendix – Repeat victims of crime	10
Appendix – Acquisitive Crime	11
Appendix – High Risk Sexual Violence	12
Appendix – Antisocial Behaviour	13
Appendix – Repeat Victims of Antisocial Behaviour	14

Appendix - Crimes linked to licensed premises and taxis.....	15
Appendix – Domestic Violent Crime	16
Appendix – High Domestic Abuse Cases Discussed in MARAC	17
Appendix – Repeat Victims of Domestic Violence	18
Appendix – Adult Offending.....	19
Appendix – Youth Offending.....	20

The North Wales Community Safety Partnerships focus (NW CSP)

Whilst the NW Safer Communities Board is focusing at a regional level on mental health, hidden crimes and technology enabled crimes, the Board is asking local CSP's to focus on:

1. Reduce crime and disorder in the area

Having regard to the PCC objectives 'Prevent crime' and 'Reduce harm and the risk of harm'

- Reduce victims based crime
- Reduce ASB
- Support vulnerable people to prevent them becoming victims of crime
- Reduce repeat incidents of victim based crime and ASB for victims of perpetrators
- Work with MARAC to manage the levels of repeat victims of Domestic Abuse
- Deal effectively with high risk cases of Domestic Abuse and Sexual Violence
- Increase awareness amongst young people of sexual violence

2. Reduce crime and disorder in the area

Having regard to the PCC objective 'Reduce harm and the risk of harm' and the strategic risk 'Drug and Alcohol Misuse'

- Reduce substance misuse

3. Reduce crime and disorder in the area

- Adult reoffending
- Children and young people reoffending

Victim Based Crime

Quarter	2014/15	2015/16	2016/17
Conwy			
Victim based crime	1384	1365	1538
Repeat victims of crime	386	375	468
Acquisitive crime	704	610	610
High risk sexual violence	17	21	31
Denbighshire			
Victim based crime	1274	1288	1373
Repeat victims of crime	326	378	479
Acquisitive crime	553	571	502
High risk sexual violence	17	15	28

- There has been a force wide increase in victim based crime in recent months, particularly violent crime, largely due to changes in recording processes and the rise in Conwy and Denbighshire is in line with this trend.

Based crime in Conwy is below average compared to its MSG¹peers. Denbighshire is above average for its MSG.
- Repeat victims of crime have increased in both Conwy and Denbighshire, with the current trends indicating further increases in the near future. The rise in repeat victims has been seen across North Wales and is linked to an increase in reported violent crime.
- Reported levels of acquisitive crime (all theft offences) has fallen in both Conwy and Denbighshire in the first quarter of 2017/18 compared to the same period in the past three years. Both counties have a below average level of acquisitive crime compared to their MSGs.
- High risk sexual violence² has increased in both Conwy and Denbighshire. Both counties are above average when compared to MSG. There have been significant events in recent years along with increased education to promote the reporting of sexual offences and support available to victims. It is likely these activities and events have increased the reporting of historic and current offences.

¹ MSG – Most similar group, see Glossary.

² Rape and penetrative offences, therefore excluding offences such as indecent exposure.

Antisocial Behaviour

	2014/15	2015/16	2016/17
Conwy			
Antisocial Behaviour reported to NWP	1139	1003	1032
Repeat victims of Personal ASB	68	64	57
Crimes linked to licensed premises and taxis	222	125	160
Denbighshire			
Antisocial Behaviour reported to NWP	1011	909	974
Repeat victims of Personal ASB	74	57	55
Crimes linked to licensed premises and taxis	153	123	138

Seasonal variations with peaks in the summer and lows in the winter have been observed in both counties.

- Personal antisocial behaviour is antisocial behaviour that is targeted at an individual or group as oppose the community at large. Each report of personal antisocial behaviour is followed up by a risk assessment of the victim. Repeat victims are people who have been a victim of ASB two or more times in 12 months. While the overall ASB level has remained relatively stable, there has been an increase in incidents being classified as ASB Personal since changes in the recording process in March 2016 which has resulted in more repeat victims being identified. As expected the number of repeat victims in both counties have begun to stabilise in recent months.
- Crimes linked to licensed premises and taxis, excluding theft offences, is relatively stable in both counties and continues to be below the levels seen prior to August 2014.

Domestic Abuse

	2014/15	2015/16	2016/17
Conwy			
Domestic violent crime	173	149	226
High risk cases discussed in MARAC	13	25	16
Repeat victims of domestic violence	54	45	73
Denbighshire			
Domestic violent crime	116	138	170
High risk cases discussed in MARAC	16	35	20
Repeat victims of domestic violence	43	49	69

- Domestic violence includes all violent crime which has been tagged a domestic due to the relationship between the victim and offender. Reports of domestic violent crime in both Conwy and Denbighshire have increased in line with the overall upward trend in violent crime across the force. The proportion of violent crime that is tagged as domestic has remained stable at approximately 33-35% which suggests the increase is a result of improved recording processes.
- There are on average 4 high risk cases discussed at MARAC³ in both Conwy and Denbighshire each month. This is typically fewer than were being discuss two years ago.
- Repeat victims of domestic violence are people who have been victims of two or more crimes in 12 months. As the level of domestic violence has increase so has the number of repeat victims being identified. There are likely to be further increases in the coming months.

³

Multi agency risk assessment conference (MARAC) – Monthly multi agency meeting to discuss high risk / repeat cases of domestic abuse.

Reoffending

	2014/15	2015/16	2016/17
Conwy			
Adult reoffending	287	255	238
Young people reoffending	30	14	18
Denbighshire			
Adult reoffending	261	285	242
Young people reoffending	36	27	23

- Repeat adult offenders are individuals age 18 and over who have been charged or cautioned for two or more crimes in 12 months. Adult reoffending is stable in both Conwy and Denbighshire.
- Repeat youth offenders are individuals under 18 who have been charged or cautioned for two or more crimes in 12 months. Youth reoffending has reduced significantly in Conwy and Denbighshire since 2012. The current trend is stable and further reductions are not anticipated. Reductions in youth reoffending are the result of avoiding criminalising young people for minor offences such as shoplifting and criminal damage and instead using alternative disposals as recommended.

Glossary

Victim based crime – Victim based crime includes all police recorded crimes where there is a direct victim. This victim could be an individual, an organisation or corporate body. This category includes violent crimes directed at a particular individual or individuals, sexual offences, robbery, theft offences (including burglary and vehicle offences), criminal damage and arson.

MSG – Most Similar Group – A group of counties in England and Wales similar both demographically and geographic and used to compare local CSPs against.

Multi agency risk assessment conference (MARAC) – Monthly multi agency meeting to discuss high risk / repeat cases of domestic abuse

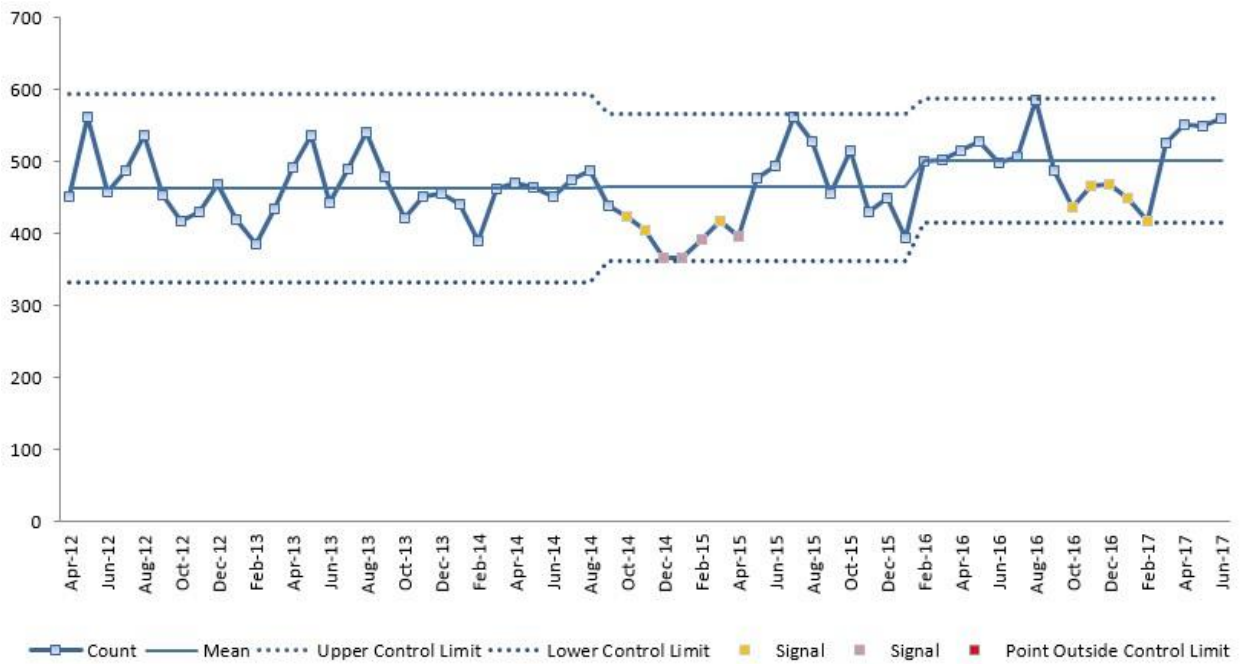
Appendix –

Victim based crime

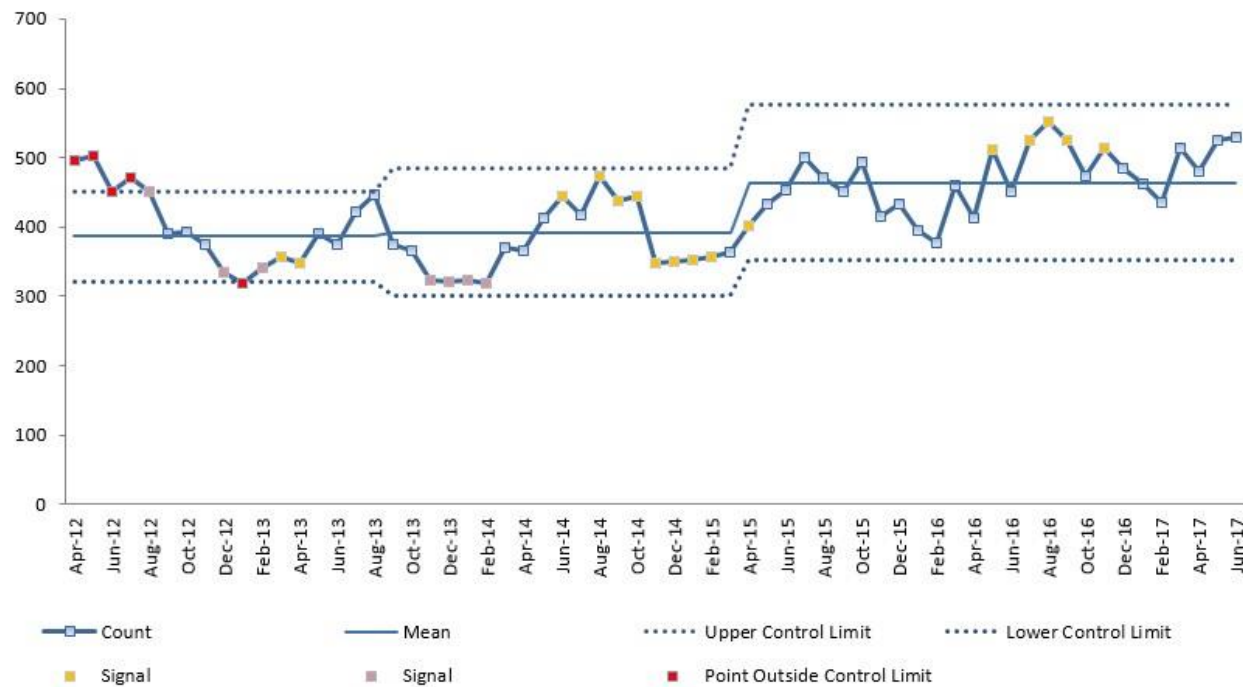
8

9

Victim based crime in Conwy



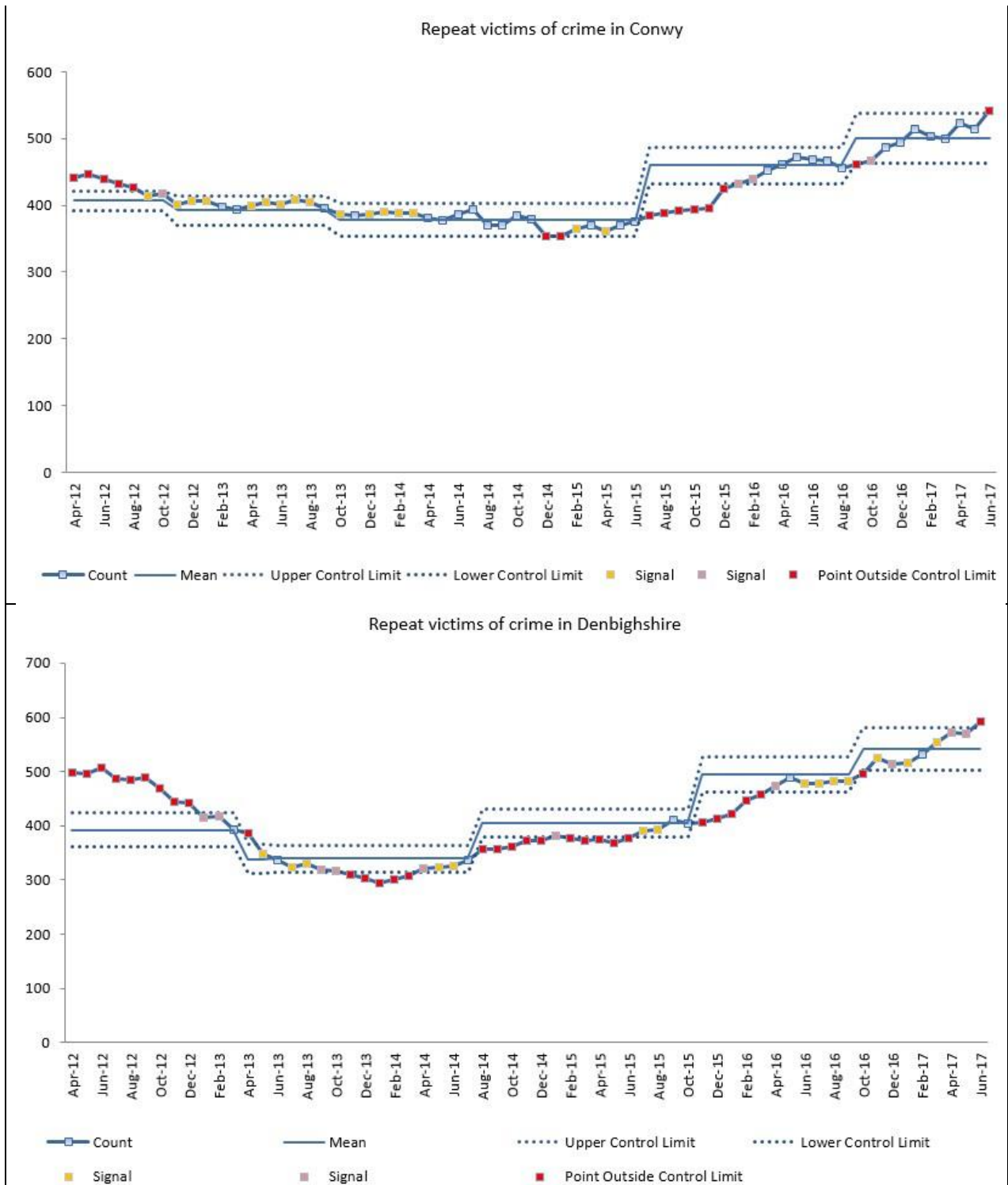
Victim based crime in Denbighshire



Appendix –

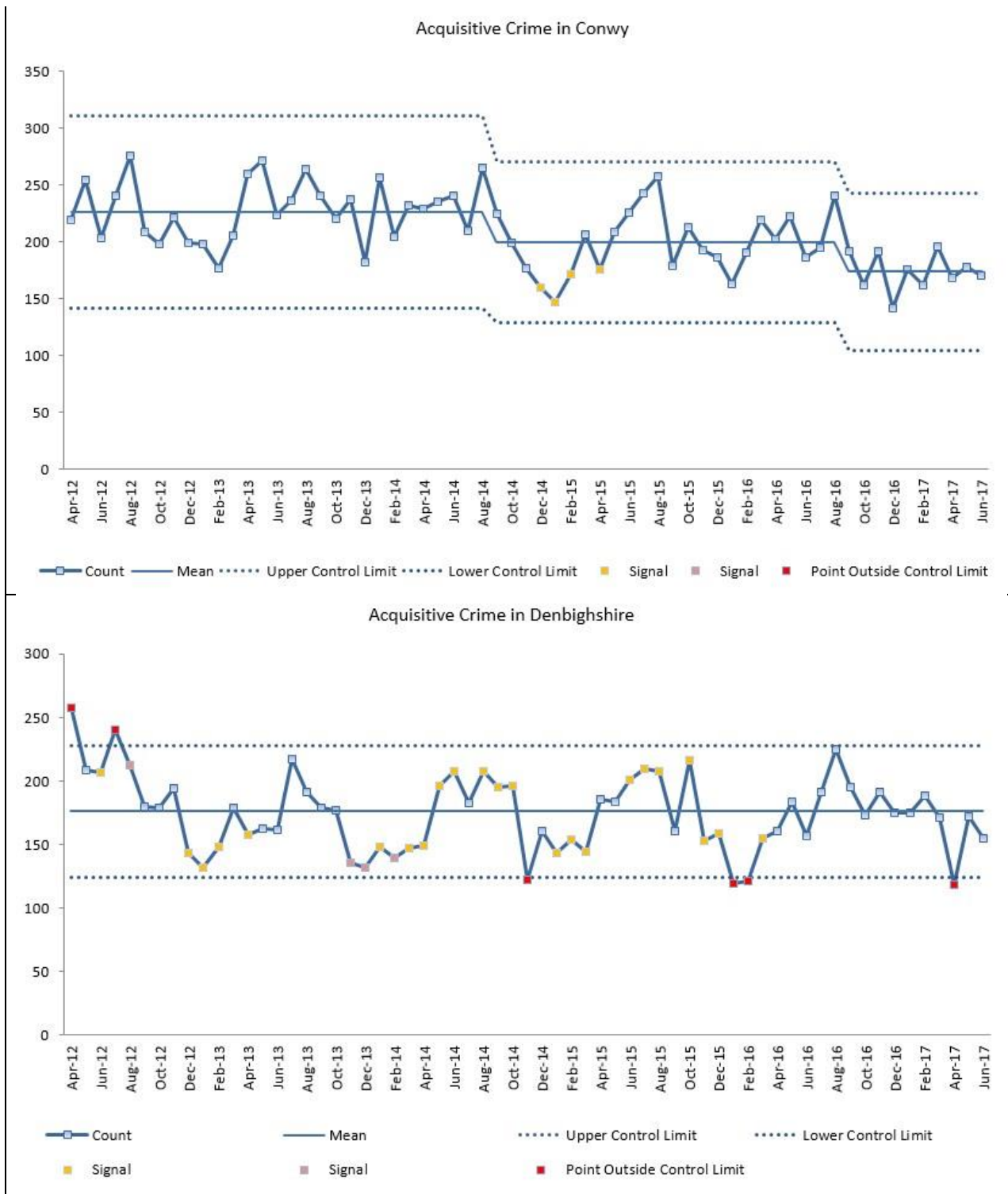
Appendix –

Repeat victims of crime



Acquisitive crime

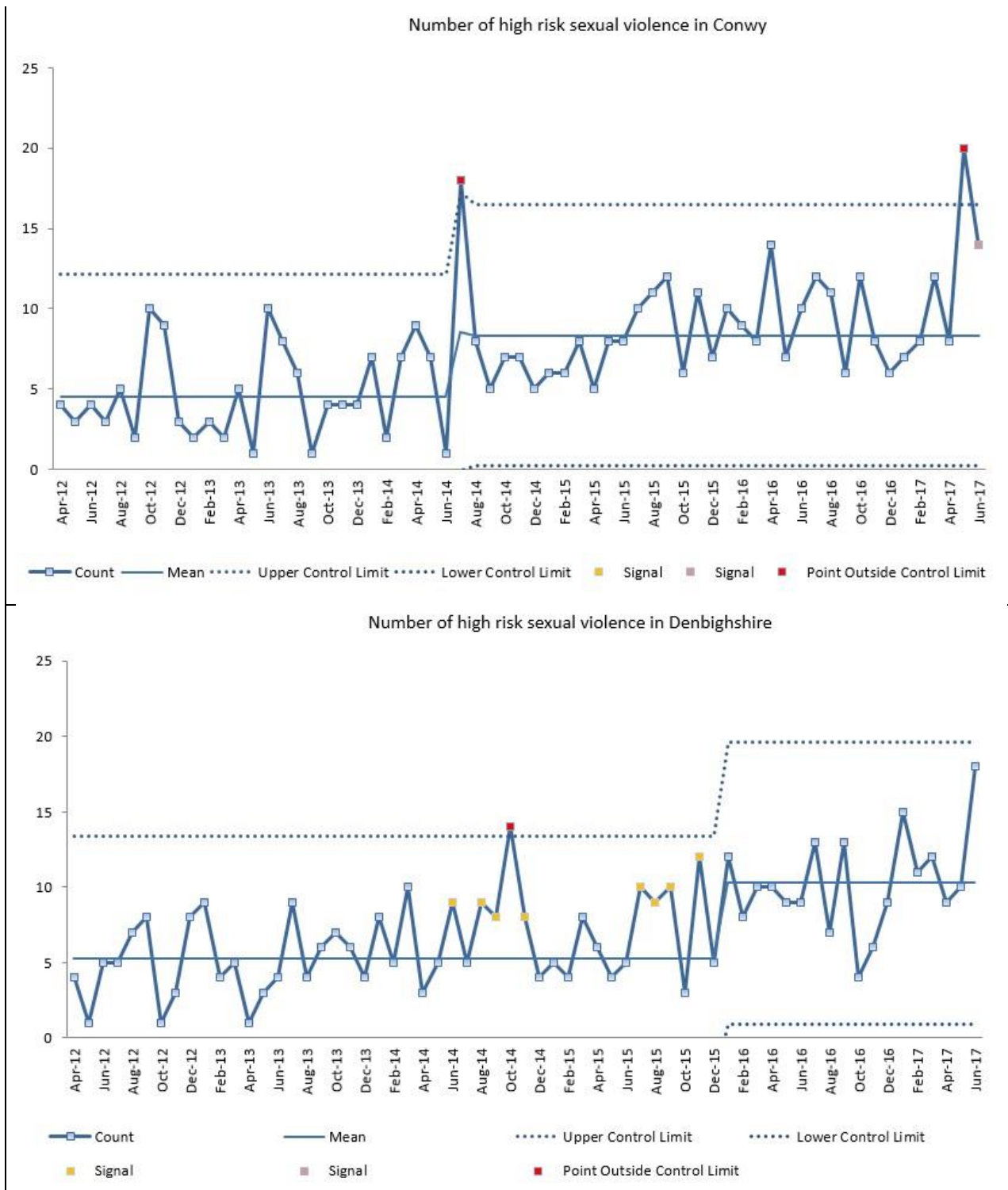
Appendix –



Appendix –

**High risk sexual
violence**

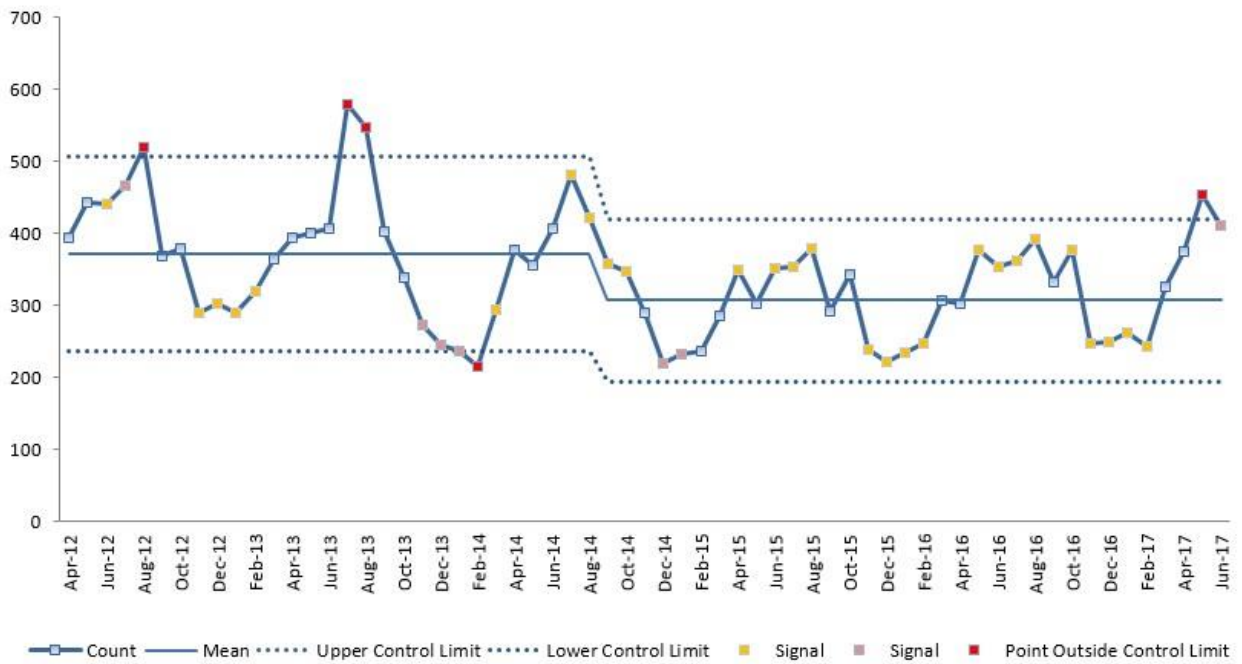
Appendix –



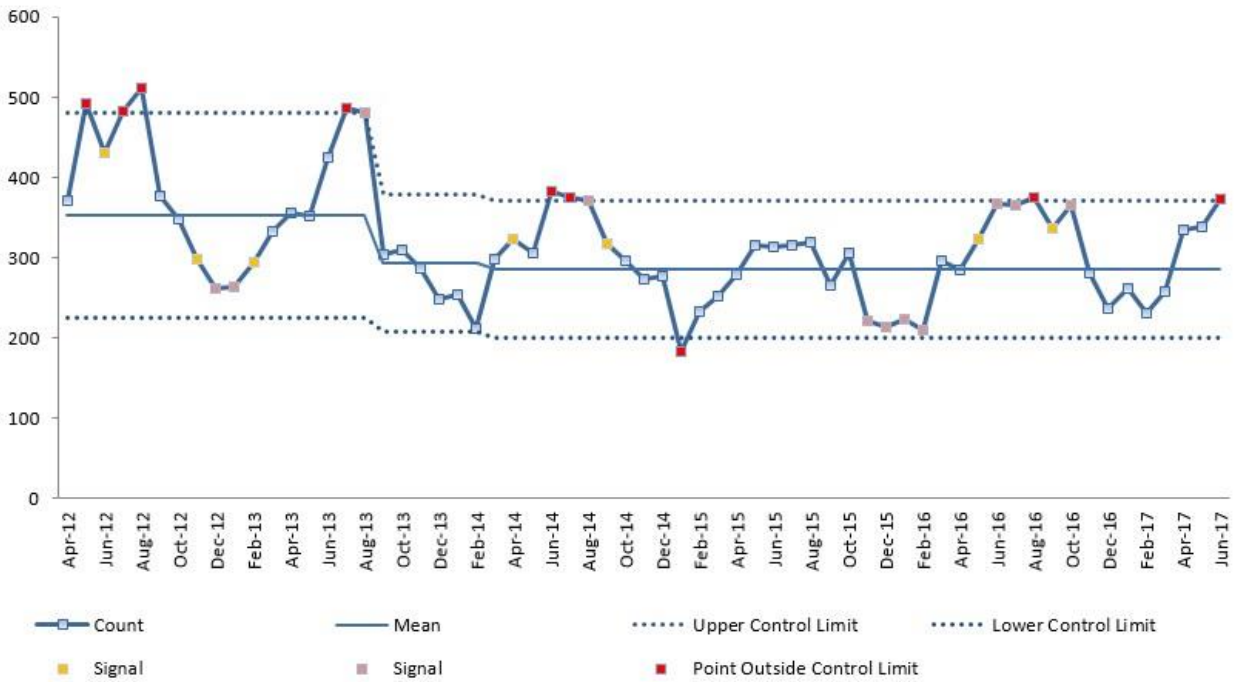
Appendix

- Antisocial Behaviour

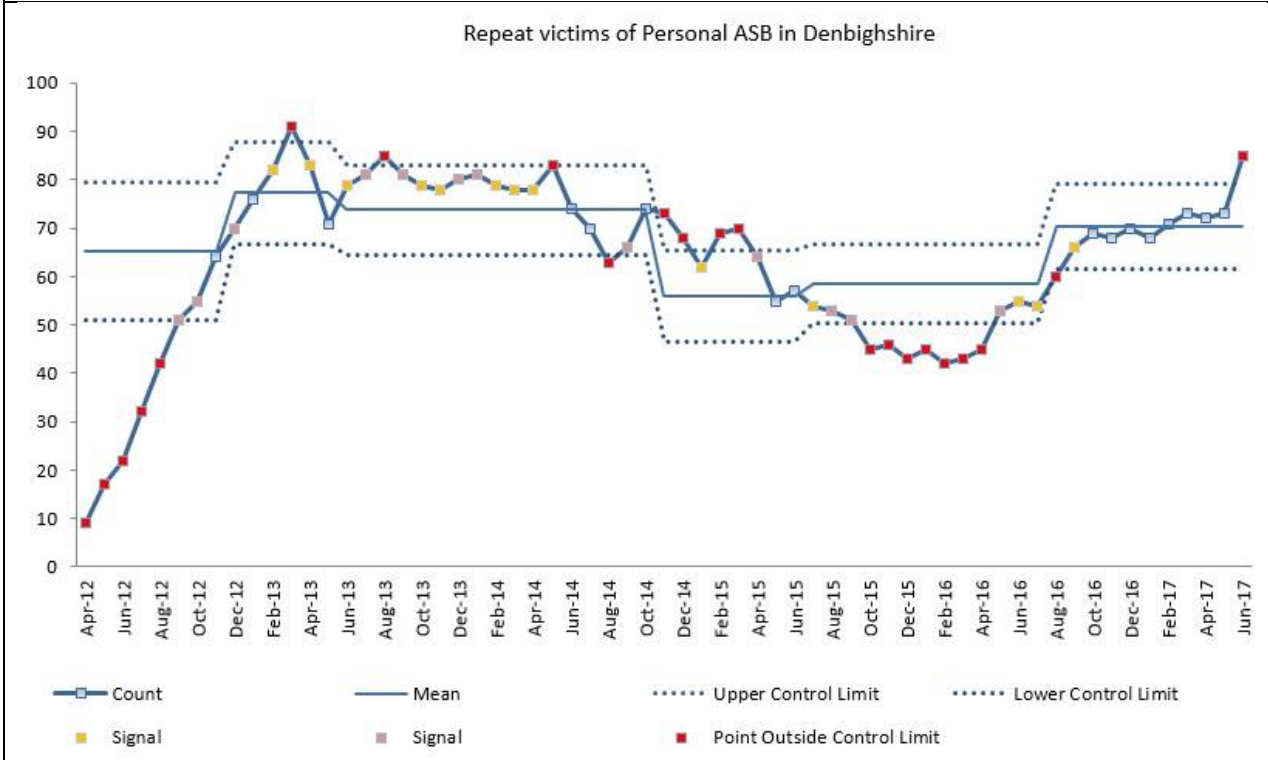
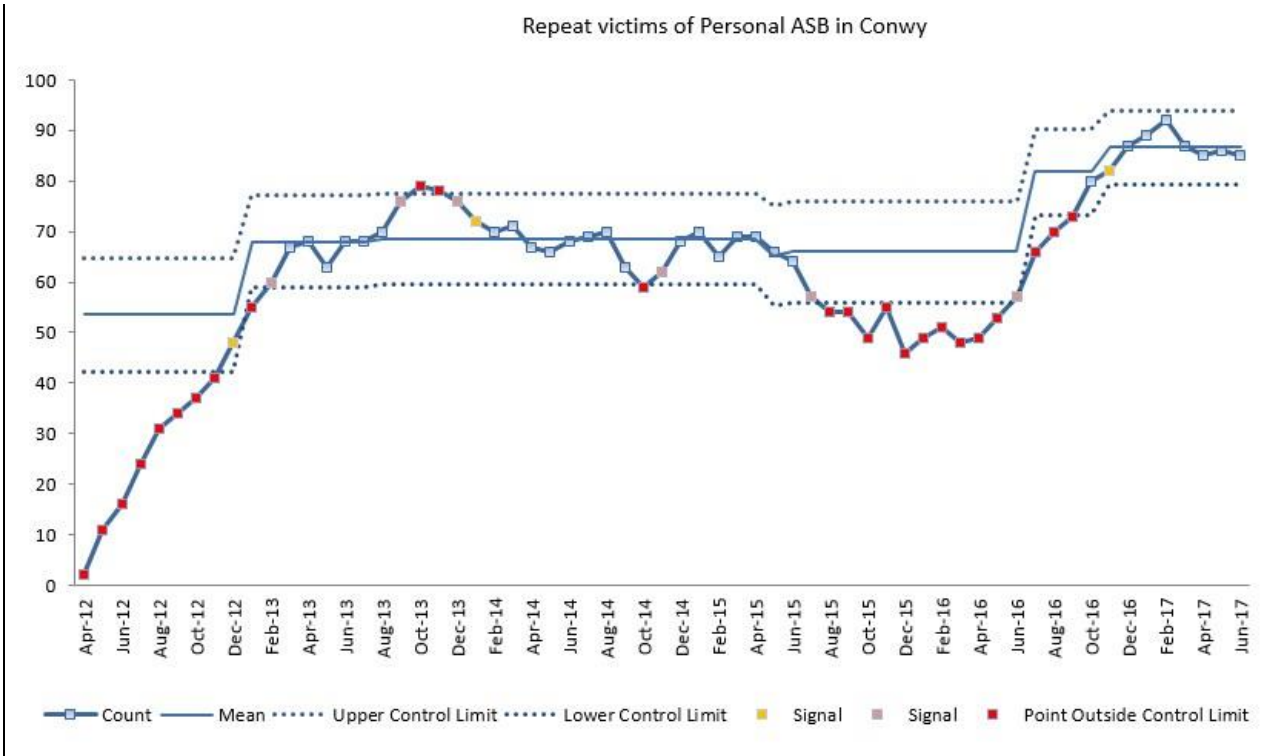
Antisocial Behaviour in Conwy



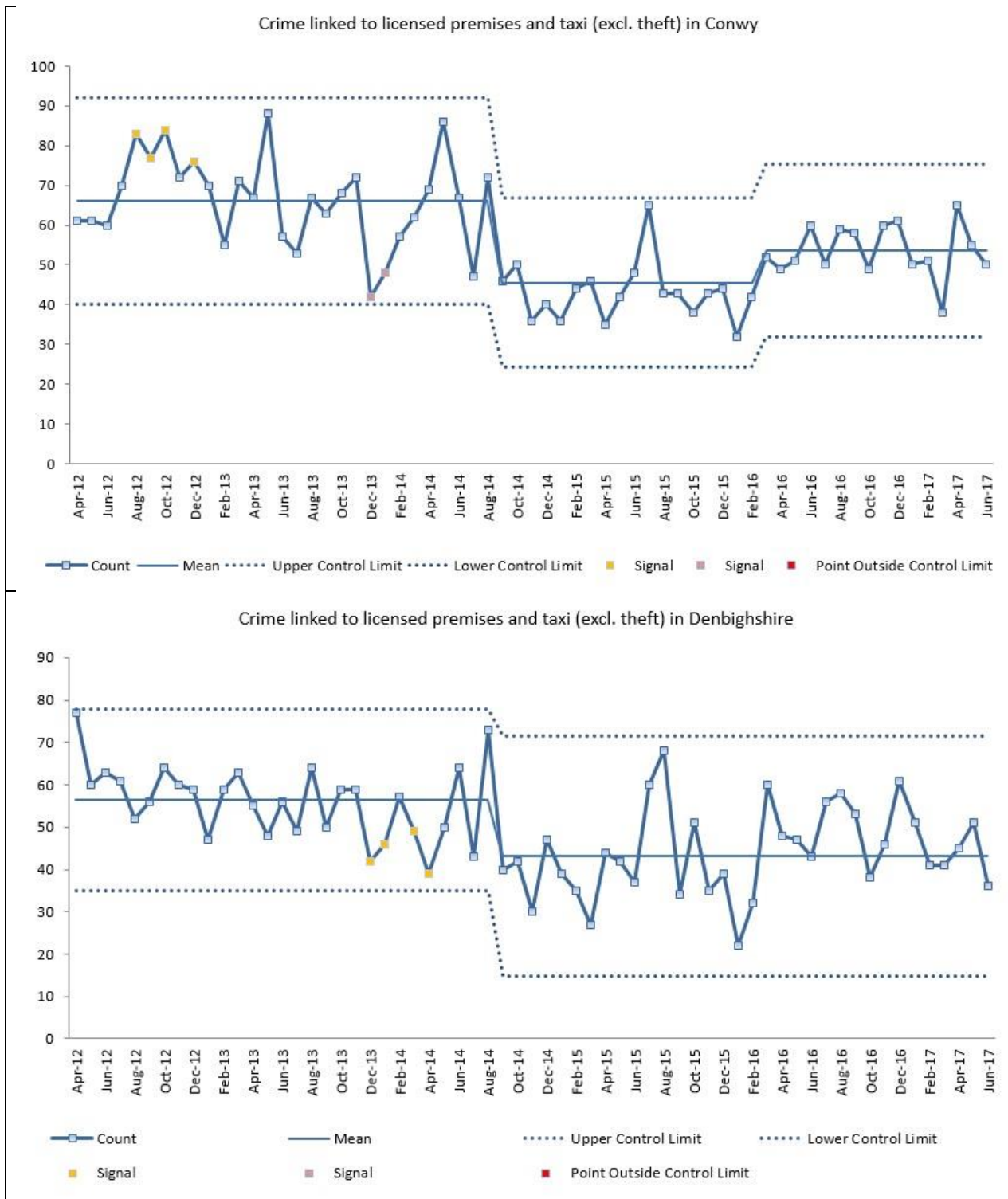
Antisocial Behaviour in Denbighshire



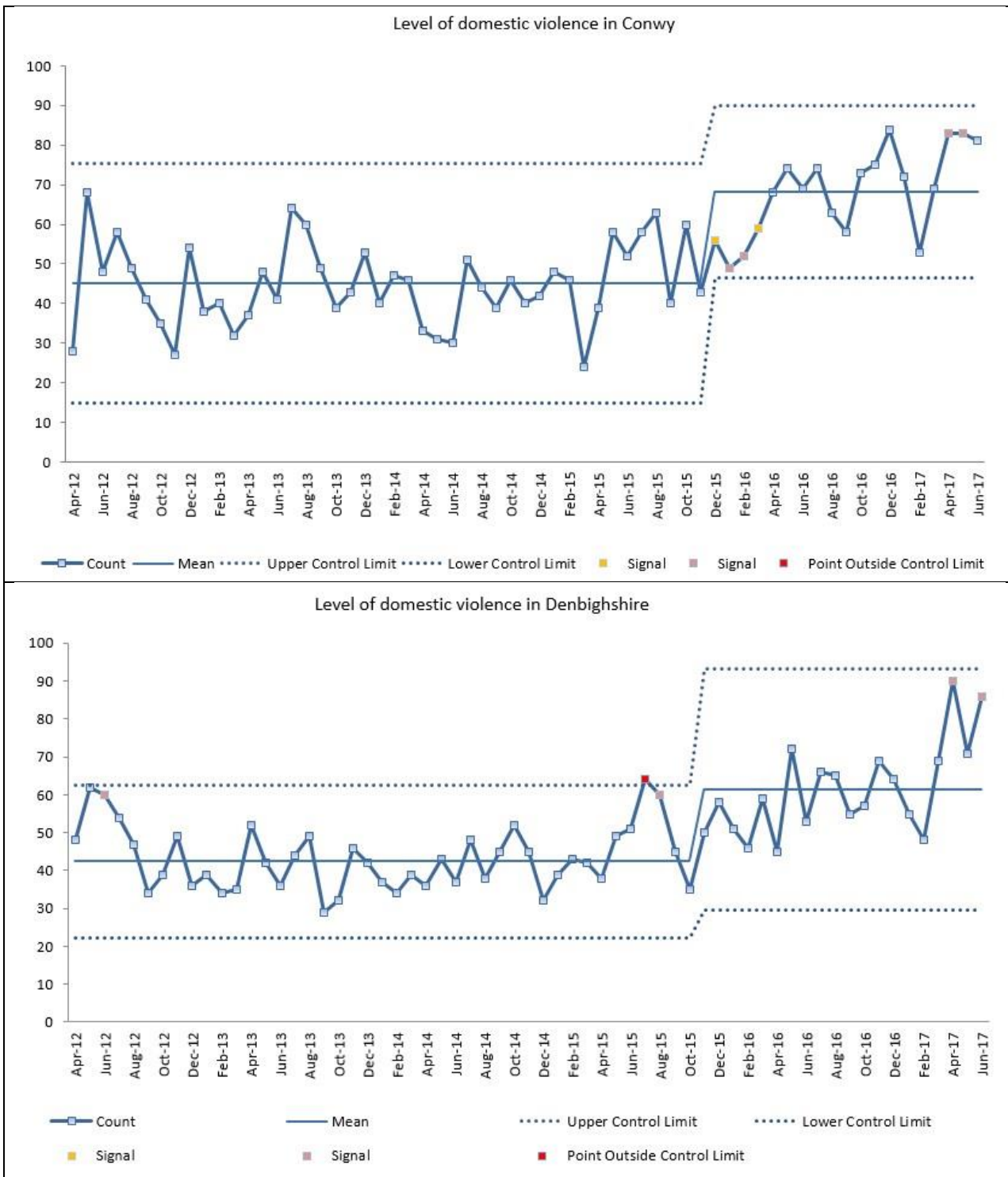
- Repeat victims of ASB Personal



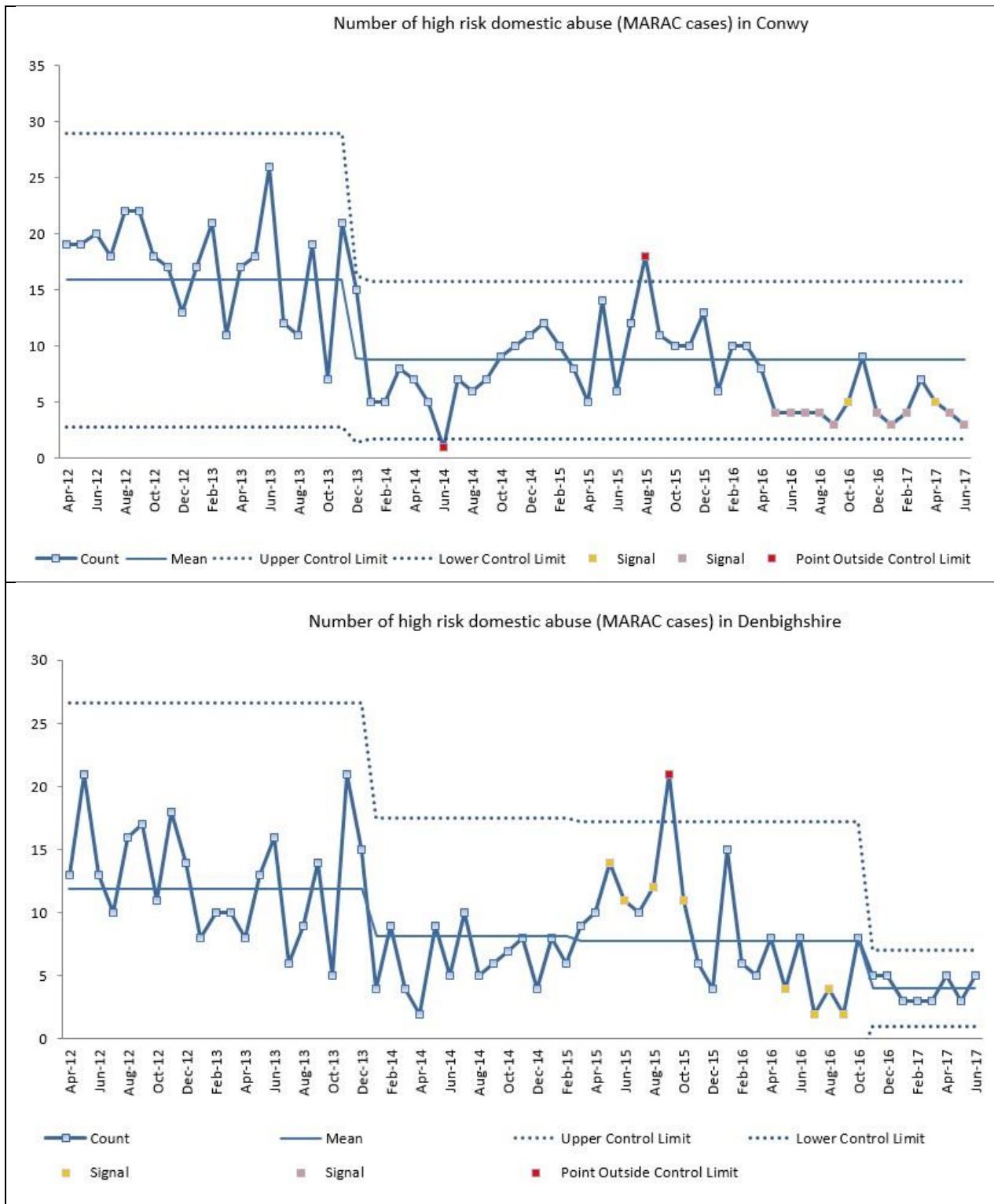
Appendix – Crimes linked to licensed premises and taxis



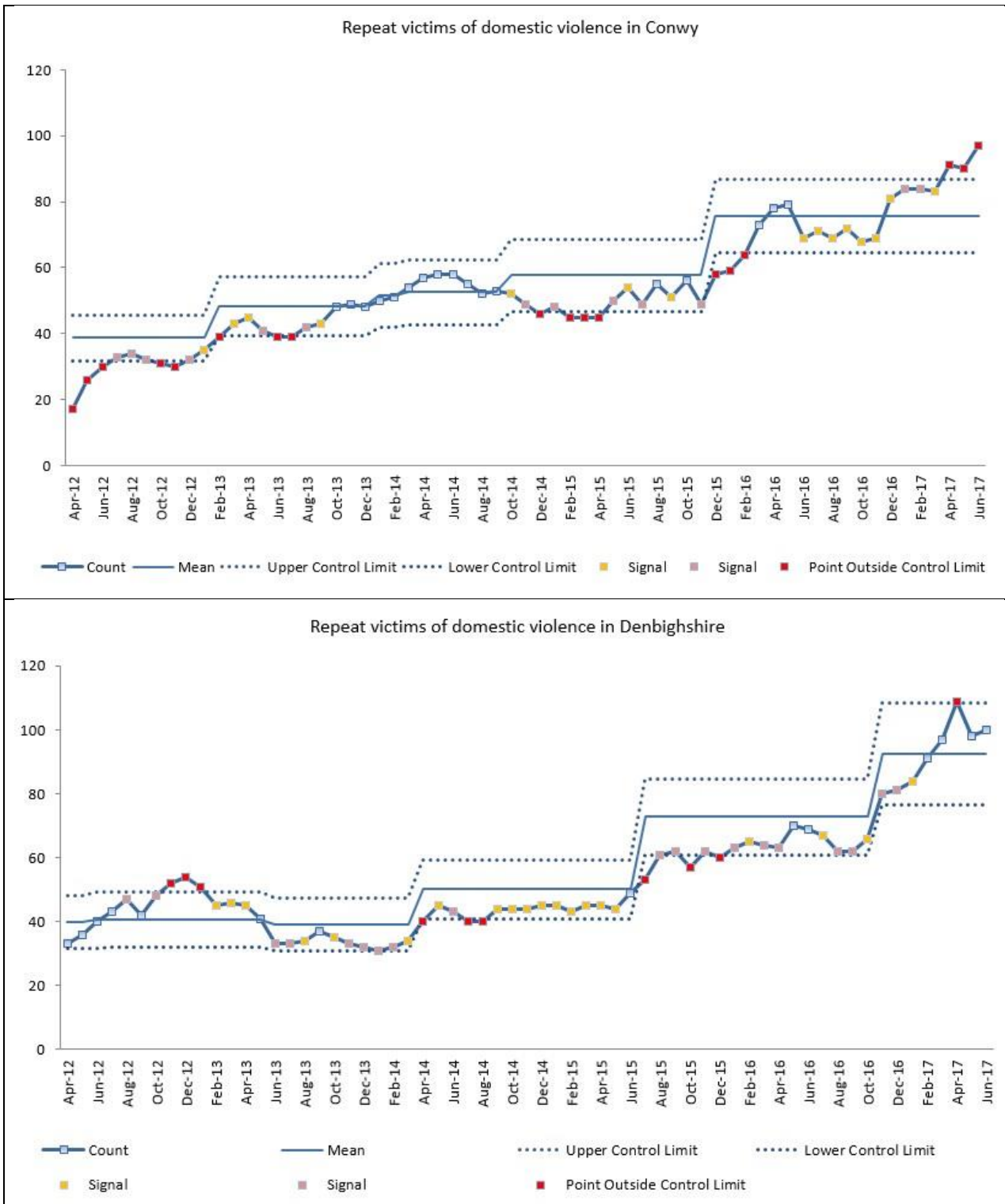
Appendix – Domestic violent crime



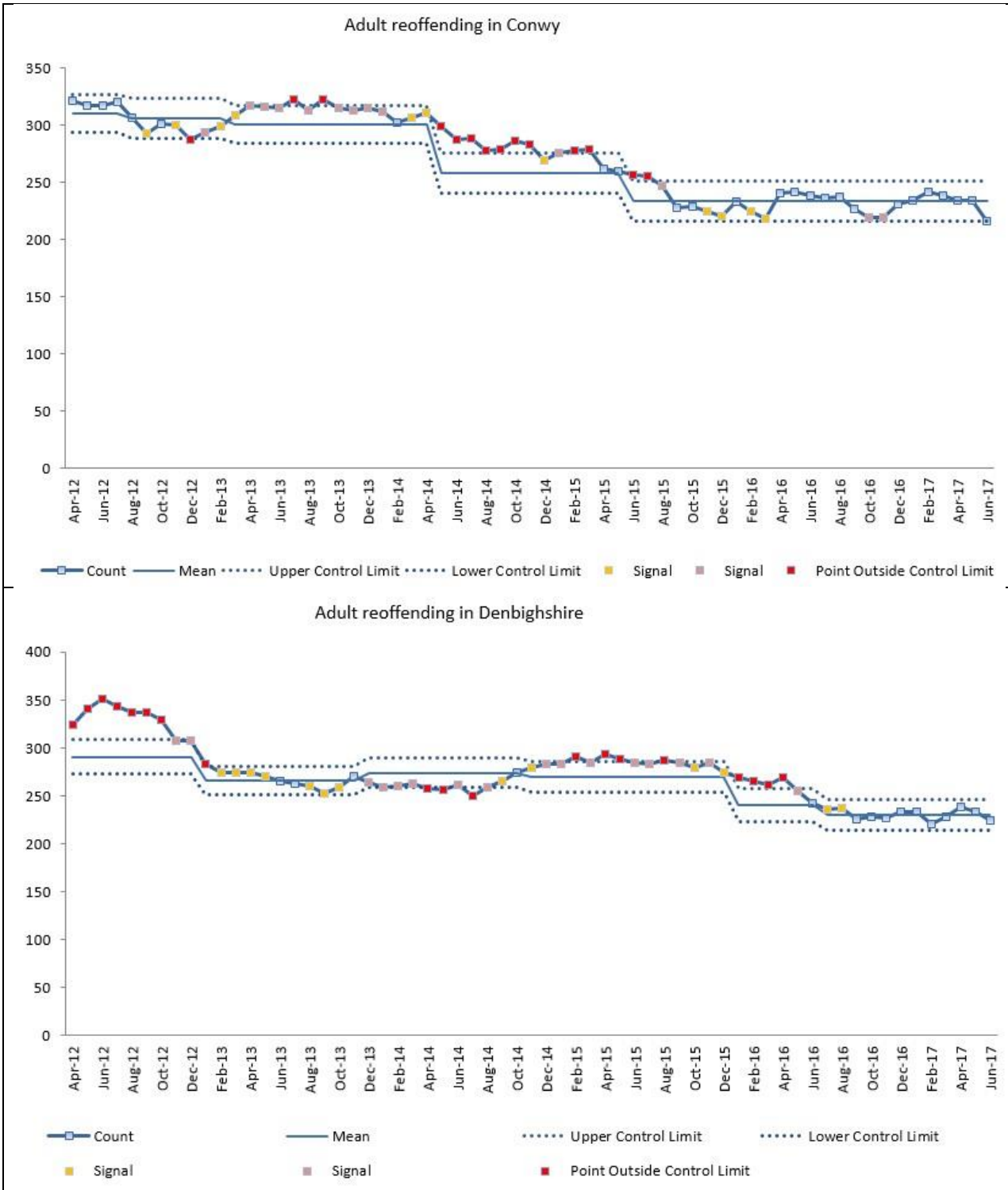
Appendix – High risk domestic abuse cases discussed in MARAC



Appendix – Repeat victims of Domestic Violence



Appendix – Adult Offending



Appendix – Youth Offending

